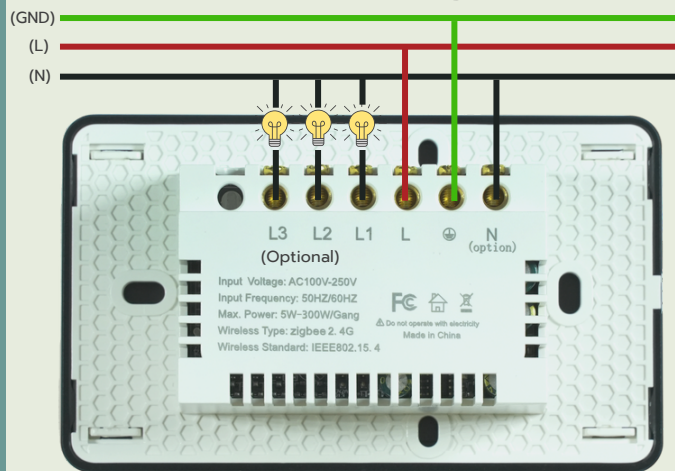


RINT8CH SWITCH

RINT8CH Switch allows you to control your light freely from anywhere with voice or touch command via RINT8CH app on your smart phone.



Product layout



Specification

- Product type: Wall type light switch (US standard)
- Material: Aluminium frame, Tempered glass panel and PC back base
- Dimension: 120mm x 72mm x 8.5mm and 72mm x 48mm x 33mm (back base)
- Input voltage: AC100V-250V / AC50-60Hz
- Operating system: iOS 9 / Android 4.4 above
- Wireless support: 2.4Ghz wifi Zigbee (requires RINT8CH Gateway)
- Wireless control: Anywhere with 2G/3G/4G/5G network on your phone
- Way to control: Touch, App control, Voice control
- Warranty: 1 year
- Free Installation*

Download



RINT8CH App



Network settings

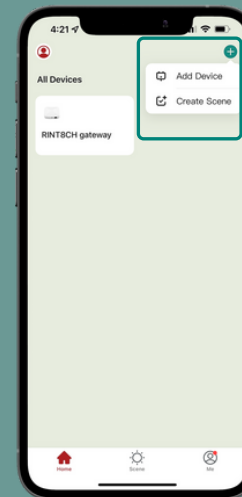
Prepare to setup

- After download RINT8CH app
- Register an account and verify
- Connected to RINT8CH gateway
- Connect your phone to WIFI 2.4Ghz

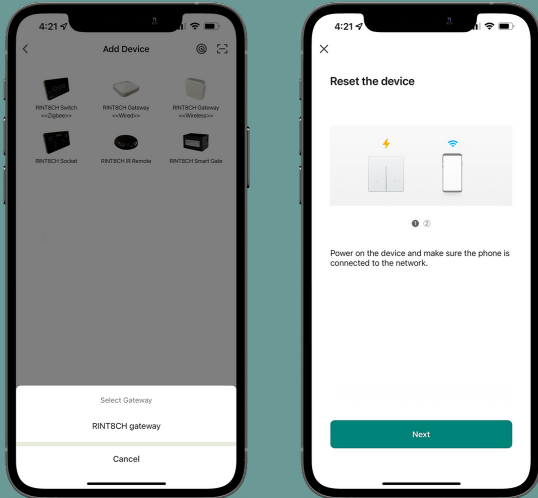


Setup RINT8CH Switch

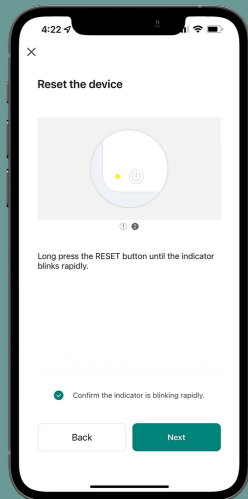
- Add Device
- Select RINT8CH Switch <<Zigbee>>



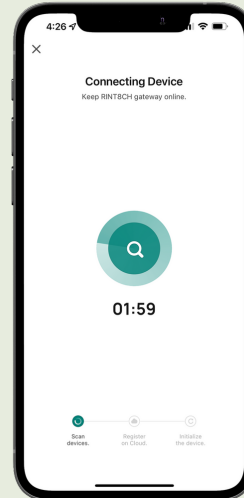
- Choose your RINT8CH Gateway
- Make sure RINT8CH Switch is on



- Long press any button for 5 sec
- Confirm blinking indicator

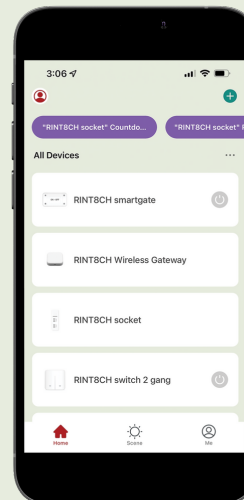


- Wait For RINT8CH Switch to connect
- Enjoy!!



Troubleshoot

- Reset router
- Reset Gateway
- Wait for RINT8CH devices connects
- Enjoy!!!



Related Products



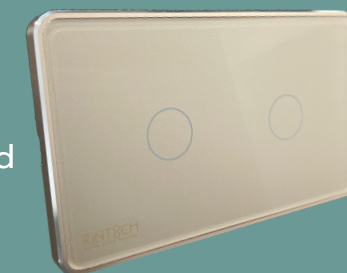
Midnight Black



White Marble



Cosmo Grey



Champagne Gold